



Options booklet **2025**

Introduction

Welcome Year 9 to your options process! This is the first point in your education that you are able to influence the curriculum that you follow. Here at Serlby Park Academy we understand how important a time this is for you and intend to support you each step of the way. We aim for all students to be able to reach their full potential over a suite of subjects.

When choosing your options we want you to be fully informed with regards to the demands of each of the courses available. Assemblies, option evening and conversations with your teachers and parents will help you make the right decision. Ensure that you are taking into consideration subjects that you enjoy, that you succeed in, or that will support you in your post-16 next steps.

If you have any questions or concerns throughout any of this process please do not hesitate to speak to me. Together we will ensure that the right decisions are made for you as an individual.

Miss Smith

Vice Principal

Options timeline

Options assemblies – An introduction to the options process and the options guide

**19th March/
20th March**

Option evening – Presentations/subject information stands/careers advice and guidance

27th March

Deadline for submission of online options form (see website)

1st April

One to one meetings where necessary with Miss Smith

**Week commencing
Monday 21st April**

Confirmation letters will then be sent out to parents

Options blocks

Students will select four options, one from each of the option blocks A, B, C and D below. Our choices are structured like this to encourage our students to study a rich and balanced curriculum.

Option A

History	GCSE Edexcel History
Geography	GCSE AQA Geography

Option B

Triple Science	GCSE AQA Triple Science
Photography	GCSE AQA Art and Design – Photography
Performing Arts	Pearson BTEC Tech Award (Drama) Level 1/2
Health and Social Care	OCR Cambridge Nationals in Health and Social Care
Enterprise	Pearson BTEC Level 1/2

Option C

Fine Art	GCSE AQA Art and Design – Fine Art
3D Design	GCSE AQA Art and Design – 3D Design
Hospitality and Catering	WJEC Level 1/2 Hospitality and Catering
Sport Science	OCR Cambridge Nationals in Sport Science
Creative iMedia	OCR Cambridge Nationals in Creative iMedia

Option D

Spanish (only selected students)	GCSE AQA Spanish
Hospitality and Catering	WJEC Level 1/2 Hospitality and Catering
Photography	GCSE AQA Art and Design – Photography
Sport Science	OCR Cambridge Nationals in Sport Science

CORE Subject

English Language & English Literature

SUBJECT INFORMATION

English is a core subject which is compulsory for all students.

ASSESSMENT

GCSE English

This course has two examinations, 1 × 1 hour & 45 minute examination and 1 × 2 hour examination.

There is no controlled assessment; the students' final grades are determined by their examinations.

Paper 1:

Section A: Analysis of 20th Century Prose Texts.

Section B: Narrative/Recount Writing.

Paper 2:

Section A: Analysis of 19th/21st Century Non-fiction Texts.

Section B: Transactional Writing.

GCSE English Literature

This course has two examinations, 1 × 2 hour examination and 1 × 2 hour & 30 minute examination.

There is no controlled assessment; the students' final grades are determined by their examinations.

Paper 1:

Section A: Analysis of a Shakespeare Play.

Section B: Analysis of Anthology Poetry.

Paper 2:

Section A: Analysis of a Post-1914 text.

Section B: Analysis of a Pre-1914 text.

Section C: Analysis of Unseen Poetry

EXAM BOARD Eduqas



CORE Subject

Mathematics

SUBJECT INFORMATION

Mathematics is a core subject which is compulsory for all students.

COURSE OUTLINE

Year 10 will follow a GCSE program of study suited to their ability – Foundation or Higher tier. The content is linear, building on previous knowledge, that concludes with external assessments at the end of year 11. Regular internal assessments will take place throughout year 10 and 11 to track progress.

Due to the strengthening of the GCSE greater challenge will be present in both the foundation and higher exams with a much stronger emphasis on problem solving.

As a department we put on weekly after school revision sessions and additional subject time in the school holidays, to help support or boost the progress of your child.



LEARNING AND TEACHING STYLES

The learning and teaching styles will vary according to the topic being studied, but we will aim to cater for all types of learners. Students will study individually, in small groups or as a whole class. We further extend the curriculum by offering AQA Level 2 Certificate in Further Mathematics which is designed to stretch and challenge high achieving mathematicians who are expected to achieve the top grades in GCSE Mathematics and are likely to progress to A-level study in Mathematics and possibly Further Mathematics.

PERSONAL SKILLS/QUALITIES

Students will need to demonstrate an excellent work ethic throughout Years 10 and 11 in order to achieve the best result possible in this crucial GCSE subject. They will be required to work with other students, communicate their ideas verbally and in writing and apply their knowledge to solve problems presented to them.

Independence is essential especially when it comes to ensuring students achieve the grade they would like or need for their future. Opportunities are always available for extra help and they should seek it out should they need it! A positive and consistent attitude towards homework supports success in this subject.

PROGRESSION ROUTES

GCSE Mathematics is still an entry requirement for many courses at colleges of further education, for apprenticeships and for A Levels. There is also a clear progression via GCSE Mathematics and A level Mathematics to a Mathematics Degree.

COURSE OPPORTUNITIES

Mathematics is a skill requirement for careers such as mechanical engineering, electronic engineering and many aspects of the building trade.

Mathematics graduates may become:

- Accountants
- Bankers
- Actuaries
- Statisticians
- Economists
- Researchers
- Management Consultants
- Transport Planners
- Lecturers
- Teachers!

ADDITIONAL ADVICE

Please speak to your connections advisor, Mathematics teacher or research the following websites if you require further information:

- www.m-a.org.uk
- www.ima.org.uk
- www.rss.org.uk
- www.lms.ac.uk

TIERS OF ENTRY

Higher paper – 3 – 9

Foundation Paper – 1 – 5

EXAM BOARD Edexcel



SUBJECT INFORMATION

Science is a core subject – it is compulsory for all students. The exam is linear and the exams will be sat at the end of the course.

COURSE OUTLINE

The Science GCSE course is studied at KS4 and you receive a Double Award = 2 GCSEs in Science.

We are studying the AQA Syllabus TRILOGY.

The scheme of work covers Biology, Chemistry and Physics and the topics covered throughout the course are:

Biology

(10% maths content)

- Cells
- Organisation
- Infection and response

- Bioenergetics
- Homoeostasis
- Inheritance, variation and evolution
- Ecology

Chemistry

(20% maths content)

- Atomic structure and periodic table
- Bonding, structure and properties of matter
- Quantitative chemistry
- Energy changes
- Rate and extent of chemical change
- Organic chemistry
- Chemical Analysis
- Chemistry and the atmosphere
- Using resources

Physics

(30% maths content)

- Energy
- Electricity
- Particle model and atomic structure
- Forces
- Waves
- Magnetism and Electromagnetism

There are six papers; two biology, two chemistry and two physics papers totaling 7.5 hours of examinations.

CORE Subject

Physics

SUBJECT INFORMATION

This course will help you develop a deep understanding of science. It will encourage your development of knowledge and understanding in physics. There is a need to be able to understand and use mathematical language in explanations, applications and evaluations in this course

This is only taught as a separate science if you choose to take the Triple Award Science option block.

COURSE OUTLINE

The course is split into four areas. It is designed to develop your scientific thinking. Then it will build your experimental skills and strategies. It will seek to develop your analysis and evaluation and finally develop your understanding of scientific vocabulary, quantities, units and symbols.

ASSESSMENT

Paper 1 (1hr 45min)

Topics covered are:

- Energy
- Electricity

- Particle model of matter
- Atomic structure.

Paper 2 (1hr 45min)

Topics covered are:

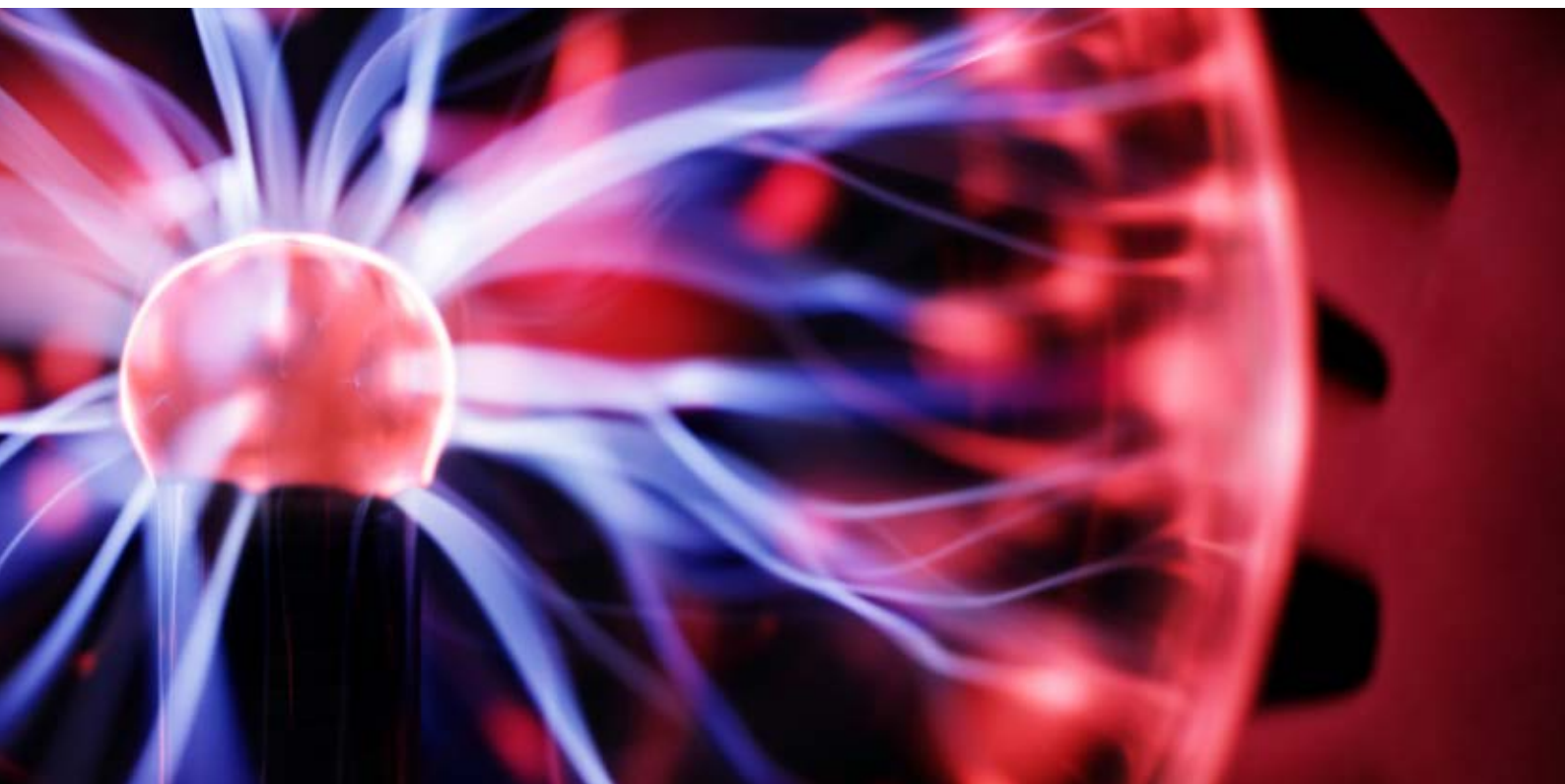
- Forces
- Waves
- Magnetism and electromagnetism
- Space physics.

TIERS OF ENTRY

Foundation Tier

Higher Tier

EXAM BOARD AQA



CORE Subject

Chemistry

SUBJECT INFORMATION

This course will help you develop a deep understanding of science. It will encourage your development of knowledge and understanding in chemistry.

COURSE OUTLINE

The course is split into four areas. It is designed to develop your scientific thinking. Then it will build your experimental skills and strategies. It will seek to develop your analysis and evaluation and finally develop your understanding of scientific vocabulary, quantities, units and symbols.

This is only taught as a separate science if you choose to take the Triple Award Science option block.

ASSESSMENT

Paper 1 (1hr 45min)

Topics covered are:

- Atomic structure and the periodic table
- Bonding, structure and the properties of matter

- Quantitative chemistry
- Chemical changes
- Energy changes.

Paper 2 (1hr 45min)

Topics covered are:

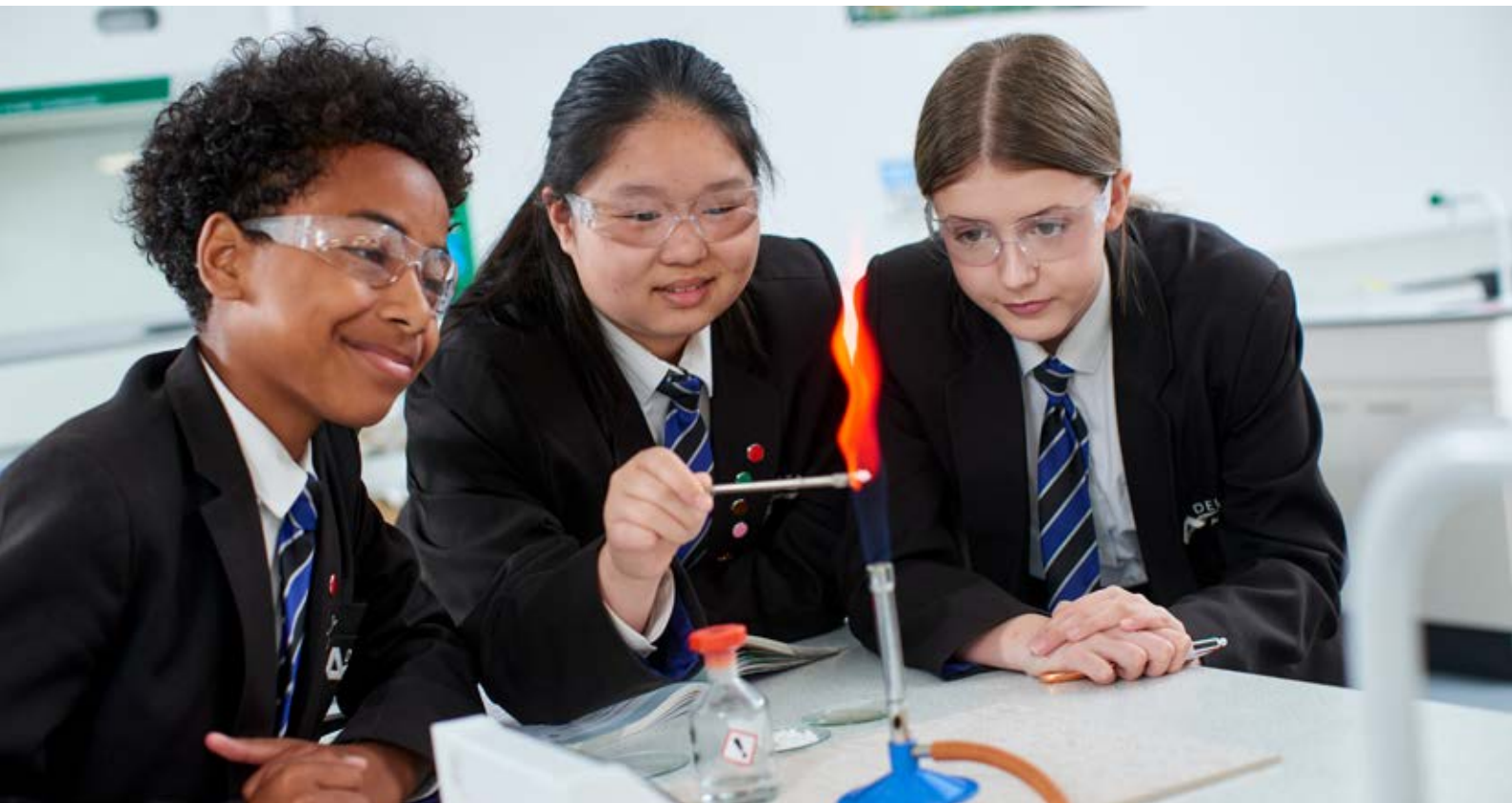
- The rate and extent of chemical change
- Organic chemistry
- Chemical analysis
- Chemistry of the atmosphere
- Using resources.

TIERS OF ENTRY

Foundation Tier

Higher Tier

EXAM BOARD AQA



CORE Subject

Biology

SUBJECT INFORMATION

This course will help you develop a deep understanding of science. It will encourage your development of knowledge and understanding in biology.

COURSE OUTLINE

The course is split into four areas. It is designed to develop your scientific thinking. Then it will build your experimental skills and strategies. It will seek to develop your analysis and evaluation and finally develop your understanding of scientific vocabulary, quantities, units and symbols.

This is only taught as a separate science if you choose to take the Triple Award Science option block.

ASSESSMENT

Paper 1 (1hr 45min)

Topics covered are:

- Cell biology
- Organisation

- Infection and response
- Bioenergetics.

Paper 2 (1hr 45min)

Topics covered are:

- Homeostasis and response
- Inheritance
- Variation and evolution
- Ecology.

TIERS OF ENTRY

Foundation Tier

Higher Tier

EXAM BOARD AQA



FOUNDATION

History

COURSE OUTLINE

Throughout the History GCSE we will investigate a range of events including Medicine in Britain circa 1250-present day and the British sector of the Western Front, 1914 to 1918, including injuries, treatment and the trenches.

Secondly we will look at Early Elizabethan England, 1558–88. In addition we study the Cold War. Finally Weimar and Nazi Germany is covered looking at events circa 1918 to 1939.

History teaches you how and why the World came to be as it is today, History asks 'How did things get to be this way?'. History deals with big issues such as racism, power, war politics, discrimination and terrorism.

ASSESSMENT

History consists of three written papers at the end of year 11.

COURSE OPPORTUNITIES

Employers and universities value History very highly; the skills that are taught within the subject are very useful in work, study and life. History can lead to a wide range of jobs such as journalist, librarian, work within the tourist industry and lawyer. History also helps pupils:

- Think independently and critically;
- Improve their problem solving skills;
- Weigh conflicting factors carefully before taking critical decisions;
- Gain an understanding of human nature, allowing them to better understand the actions of people in the past and present.

EXAM BOARD Edexcel



FOUNDATION

Geography

SUBJECT INFORMATION

The Geography GCSE allows pupils to deepen their understanding of topics covered in Geography at Key Stage 3 as well as introducing them to new ideas and concepts.

COURSE OUTLINE

Pupils will study 3 physical environment topics which consist of Natural Hazards, The Living World and Physical Landscapes in the UK; they will also study 3 human environment topics; these include Urban Challenges, The Changing Economic World and Resource Management. Geography will allow pupils to make sense of the world around them, looking at current local and global issues, whilst considering how we protect our world for future generations. Within these topic areas geographical skills such as map reading, data analysis and enquiry are developed. Issues will be looked at that will encourage pupils to weigh up both sides of an argument.

There will be two compulsory pieces of fieldwork in both a human and physical environment, carried out during the summer term of year 10.

ASSESSMENT

The Geography exam consists of three written papers taken at the end of year 11.

Paper 1 will cover the physical topics.

Paper 2 will cover the human topics.

Paper 3 will be questions based on the fieldwork pupils have carried out as well as questions on a Pre-release topic booklet from any aspect of the course (paper 1 or 2)

COURSE OPPORTUNITIES

A GCSE in Geography opens up options for you in your future, as employers and universities see geography as a robust academic subject rich in skills, knowledge and understanding. Employers recognise the diverse skills taught through the subject including problem solving, analytical thinking and working within a team. It provides pupils with a variety of options when it comes to



post 16 education. It allows pathways into 'A' level Geography and Environmental Science. Linked with other courses, Geography can lead to many great careers including engineering, retail and business management alongside more specific pathways such as environmental protection and travel and tourism.

EXAM BOARD AQA

COURSE OUTLINE

The AQA examination course requires that pupils will develop the ability to understand and use vocabulary and structures based on three themes and associated topics introduced during Years 7 and 8, namely:

Identity & Culture

- Relationships with family and friends
- Free Time and the Media
- Health
- Customs and festivals in Spanish-speaking countries/communities

Local, National, International and Global areas of interest

- Home, town, neighbourhood, and region
- Social issues
- Global issues
- The environment
- Poverty/homelessness
- Travel and tourism

Current and future study and employment

- My studies
- Life at school/college
- Education post-16
- Jobs, career choices and ambitions

ASSESSMENT

Listening

Written exam:

- 35 minutes for Foundation, 45 minutes for Higher
- 25% of GCSE
- Section A – questions & answers in English.
- Section B – questions & answers in Spanish.

Speaking

- 7–9 minutes (Foundation)

- 10–12 minutes (Higher)
- 25% of GCSE
- Role-play
- Photo
- General conversation

Reading

- 45 minutes (Foundation Tier),
- 1 hour (Higher Tier)
- 25% of GCSE)
- Section A – questions & answers in English.
- Section B – questions & answers in Spanish.
- Section C – Translation from Spanish into English.

Writing

- Written exam: 1 hour (Foundation Tier), 1 hour 15 minutes (Higher Tier)
- 50 marks at Foundation Tier and 60 marks at Higher Tier
- 25% of GCSE
- Question 1 – structured writing task
- Question 2 – open-ended writing task
- Question 3 – translation from English into Spanish

TIERS OF ENTRY

Foundation Tier

Higher Tier

EXAM BOARD AQA

Physical Education



SUBJECT INFORMATION

Physical Education is compulsory for all students.

COURSE OUTLINE

The Physical Education Department aims to offer pupils experiences which will enable them to enjoy different forms of activity through performing, planning, evaluating and working with others.

Physical education is primarily concerned with physical capabilities, but the associated aspects of knowledge and understanding are also vital components for all children. Additionally, the development of personal skills within a social setting can be enhanced by participating in an appropriate and sensitively designed Physical Education program.

The PE curriculum delivered at Serlby Park Academy enables pupils to learn purposeful physical activity that will lead to their own positive physical, social, mental and emotional growth and encourage a lifelong commitment to an active and healthy lifestyle.

CORE AIMS

- To help promote physical fitness that will improve the quality of life.
- To learn and adopt acceptable moral and social standards.

- To develop maximum physical potential according to each individual's ability.
- To help prepare pupils to see the role of leisure in their future.
- To develop a working knowledge of safe practice.
- To promote the development of movement co-ordination and the acquisition of a range of motor skills.
- Develop the capacity to maintain interest and to persevere to achieve success.
- Foster self-esteem through the acquisition of physical competence and poise.
- Develop self-confidence through understanding the capabilities and limitations of oneself and others.

ARRANGEMENT OF TEACHING

Pupils at KS4 are offered a broad and balanced curriculum with a wide variety of sports which include the following;

- Games activities
- Net activities
- Athletic activities
- Health and well being

PARTICIPATION

PE kit must be worn in all lessons, even if pupils are injured and restricted in what they do. On such occasions pupils will be asked to officiate, analyse and evaluate performances of others whilst in the correct kit.

KIT POLICY

In order to maintain the high standards set within the school regarding uniform and for reasons of safety and hygiene, all pupils at Serlby Park academy have to wear the correct PE kit for the activities undertaken.

For additional information about the PE lessons speak to any member of the PE department.

Art and Design



SUBJECT INFORMATION

Have you ever wondered why so many creative people are successful in many different walks of life?

Creativity isn't only about pursuing artistic interests; it can also open the door to exciting career opportunities for students.

GCSE Art & Design offers students the experience to really enhance their creative skills and take an independent approach to their work.

COURSE OUTLINE

GCSE Art and Design provides students with a wide range of creative, exciting and stimulating opportunities to explore their interests in ways that are both personally relevant and developmental in nature.

This two unit specification enables students to develop their ability to actively engage in the processes of Art and Design – to build creative skills through learning and doing, to develop imaginative and intuitive ways of working and develop knowledge and understanding of media, materials and technologies in historical and contemporary contexts, societies and cultures.

COURSE OPPORTUNITIES

Gaining a GCSE in art can lead to many opportunities in further education including courses such as:

- Fine Art
- Photography
- BTEC Level 3 Art & Design
- Video game design
- Media
- Textiles
- Fashion
- Film making

ASSESSMENT

Unit 1:

- Portfolio of Work (Controlled Assessment)
- 60 per cent

Unit 2:

- Externally Set Task
- 40 per cent

You cannot take this course along with GCSE 3D design.

EXAM BOARD AQA

OTHER

AQA Art and Design Photography

COURSE OUTLINE

This is a GCSE Art & Design qualification with photography as its focus and skill. You will learn a wide range of photography techniques and apply them in an artistic way to create unique and exciting images.

This two-unit course enables students to develop their ability to engage in the artist creative process. Students will research photographers to gain a strong contextual understanding of the medium. Students will then experiment with techniques and materials before developing their own original ideas.

COURSE OPPORTUNITIES

Gaining a GCSE in Art Photography can lead to opportunities in further education including:

- Photography
- Fine Art
- Fashion
- Film
- Media

ASSESSMENT

Component 1:

Portfolio of work 60%

Component 2:

External assessment: 40%

EXAM BOARD AQA



Sport Science

OCR Cambridge National



SUBJECT INFORMATION

The OCR Cambridge National in Sport Science will equip learners with sound specialist knowledge. This knowledge will be assessed both in theory and practically for some of the units. A keen interest in sport is crucial, and a willingness to take part in practical lessons is essential. This being said there is a requirement for written coursework, therefore learners must be prepared to explain and justify their knowledge in written form.

COURSE OUTLINE

Practical Content

- Undertake fitness tests to assess personal fitness
- Design and complete a 6-week training programme to improve areas which require improvement
- Investigating the short- and long-term effects of exercise on the body

Written Content

- You will sit a 1 hour 15 minute written exam

titled: Reducing the risk of sports injuries and dealing with common medical conditions

- You will write up coursework based on findings from practical research, and evaluate any impact or findings you discover, as well as background information on key areas within the topics.

MANDATORY UNITS

R180 Reducing the risk of sports injuries and dealing with common medical conditions

R181 Applying the principles of training: Fitness and how it affects skill performance

OPTIONAL UNITS

R182 The body's response to physical activity and how technology informs this

R183 Nutrition and sports performance

GRADING

All results are awarded on the following scale:

- Distinction* at Level 2 (D2*)
- Distinction at Level 2 (D2)
- Merit at Level 2 (M2)
- Pass at Level 2 (P2)
- Distinction at Level 1 (D1)
- Merit at Level 1 (M1)
- Pass at Level 1 (P1).

ASSESSMENT

Overall, the course will be worth 200 marks.

This is comprised of:

- 40% External Exam
- 60% Coursework

EXAM BOARD OCR Cambridge National

Performing Arts (Acting)

Pearson BTEC Tech Award Level 1/2

SUBJECT INFORMATION

The Pearson BTEC Level 1/2 Tech Award in Performing Arts is for learners who want to acquire sector-specific applied knowledge and skills through vocational contexts by studying professionals' work and processes used, the skills and techniques used in different roles, and how to contribute to the creation of a performance. The qualification enables learners to develop their sector-specific skills, such as refining work and applying skills for a performance using realistic vocational contexts, it will also support development of their personal skills, such as working with others, working to deadlines, and responding to feedback through a practical and skills-based approach to learning and assessment.

COURSE OUTLINE

Units of Study:

1 Exploring the Performing Arts

Learners will develop their understanding of the performing arts by examining the work of performing arts professionals and the processes used to create performance. Learners will explore and participate in workshops and classes to develop their knowledge and understanding of the interrelationships between processes, techniques and approaches that contribute to performance repertoire.

2 Developing Skills and Techniques in the Performing Arts

Learners will develop their performing arts skills and techniques through the reproduction of acting repertoire as performers. Learners will participate in rehearsals, continuing the development of skills and techniques. They will apply interpretative skills and techniques appropriate to the selected discipline in a performance. Learners must track their progress during this component, reflecting on their development of skills and working practices in workshops, through to rehearsals and performances.

3 Responding to a Brief

Learners will be given the opportunity to work as part of a group to contribute to a workshop



performance as a performer in response to a brief and stimulus. Learners will understand how to respond to a brief through discussion and practical exploration activities. They will demonstrate how to select and develop necessary skills and techniques. They will demonstrate effective use of performance skills in a workshop performance to the target audience, then evaluate the development process and outcome.

ASSESSMENT

- 60% internally assessed
- 40% externally assessed

EXAM BOARD Pearson BTEC

OTHER

Level 1/2 award Hospitality and Catering

SUBJECT INFORMATION

Hospitality and Catering is all about the hospitality and catering industry. Ever wondered what it takes to work in a top hotel or restaurant? Does food and discovering new flavours in the kitchen inspire you? Maybe you're interested in developing the skills you need to work front of house?

COURSE OUTLINE

WHAT WILL I STUDY?

This qualification is made up of 2 units,

Unit 1: The Hospitality and Catering industry

You will:

Learn about the hospitality and catering industry, the types of hospitality and catering providers and about working in the industry. Learn about health and safety, and food safety in hospitality and catering, as well as food related causes of ill health.

Unit 2: Hospitality and Catering in action

Learn about the importance of nutrition and how cooking methods can impact on nutritional value. Learn how to plan nutritious menus as well as factors which affect menu planning. You will learn the skills and techniques needed to prepare, cook and present dishes as well as learning how to review your work effectively.

ASSESSMENT

HOW WILL I BE ASSESSED?

You will be assessed through a written examination and an assignment.

Unit 1 will be assessed through an exam, which is worth 40% of your qualification.

In **Unit 2** you will complete an assignment where you will plan and prepare a menu in response to a brief. This will be worth 60% of your qualification and will take 12 hours.

GRADING

All results are awarded on the following scale:

- Distinction* at Level 2 (D2*)
- Distinction at Level 2 (D2)
- Merit at Level 2 (M2)
- Pass at Level 2 (P2)
- Distinction at Level 1 (D1)
- Merit at Level 1 (M1)
- Pass at Level 1 (P1).

EXAM BOARD Eduqas



OTHER

Health & Social Care

OCR Cambridge National

SUBJECT INFORMATION

Health and Social Care focuses on how to work with different types of people in different care settings.

COURSE OUTLINE

Throughout Health and Social care, we will be gathering practical experience and understanding of what is needed to be a successful care practitioner across a range of care settings.

Students will understand and apply the fundamental principles and concepts of the rights of individuals, person-centered values, effective communication and how to protect individuals in health and social care settings.

They will develop a variety of practical skills that can be applied to real-life contexts and work situations. Students will be encouraged to think creatively, innovatively, analytically, and logically throughout the course.

MANDATORY UNITS

RO32 Principles of care in health and social care settings

RO33 Supporting individuals through life events

OPTIONAL UNITS

RO34 Creative and therapeutic activities

RO35 Health promotion campaigns

GRADING

All results are awarded on the following scale:

- Distinction * at level 2 (*2)
- Distinction at Level 2 (D2)
- Merit at Level 2 (M2)
- Pass at Level 2 (P2)
- Distinction at Level 1 (D1)
- Merit at Level 1 (M1)
- Pass at Level 1 (P1)

ASSESSMENT

- 40% Exam based
- 60% Coursework

EXAM BOARD OCR



Creative iMedia

SUBJECT INFORMATION

Creative iMedia is perfect for students passionate about media, technology, and creativity, offering the skills needed for careers in animation, video production, web development & more. Whether you want to work in games, branding, or social media, this course is the ideal launchpad for your future in the digital world.

COURSE OUTLINE

Creative iMedia is a hands-on course where students dive into the world of digital media production. You'll create a variety of media products, from websites to animations & learn how digital media shapes the world around us.

You'll start by planning & researching your projects, developing skills in storyboarding, scripting & audience targeting. Once your ideas are planned, you'll get creative, producing digital images, videos & web content. Regular feedback & self-assessment will help you refine your work, ensuring it's the best it can be.

A key part of the course is coursework based, where you'll create your own media product, documenting your journey from start to finish. This portfolio will be crucial for assessment and showcase your skills.

Alongside the coursework, you'll also prepare for an exam, testing your knowledge of media production tools, techniques, and concepts.

UNITS OF STUDY

Unit R093:

Creative iMedia in the Media Industry:

- 1 hr 30min Exam
- Worth 40% of overall grade

Unit R094:

Visual Identity & Digital Graphics:

- Coursework
- Worth 30% of overall grade



Unit R097:

Interactive Digital Media:

- Coursework
- Worth 30% of overall grade

FUTURE CAREERS

- Graphic Designer
- Web Designer
- Animator
- Video Producer
- Games Developer
- Digital Content Creator

EXAM BOARD OCR Cambridge National

OTHER

3D Design (Three Dimensional Design)

SUBJECT INFORMATION

It is designed to encourage learners to develop a wide variety of practical skills from using hand tools, machines and computer aided design and manufacture. It provides an opportunity for learners to experiment and take risks with their work whilst developing their own style, showing creativity and imagination.

They will learn how to: develop, refine and record their ideas in order to present a personal response that realises their intentions.

Students will develop knowledge and understanding of art, design in historical and contemporary contexts, societies and cultures to influence their practical work and outcomes.

By studying Three-Dimensional Design, students will develop transferable skills including how to:

- Investigate a theme and explore the cultural, environmental, social or historic relevance.
- Cultivate a creative independence to make decisions.
- Building personal resilience to understand that not everything will work first time,

experimentation and mistakes build confidence.

How will you be assessed?

- The GCSE is 100% non-exam assessment. Work will be internally assessed by the school and externally moderated by AQA.

There are two components:

- Component 1 Portfolio: produce a sustained project and a selection of further work that represents the course of study. This is worth 60% of your overall marks.
- Component 2 Externally set assignment: there is a separate externally set task paper. It features seven tasks and you have to complete one of them. You get preparation time, plus ten hours of supervised time. This is worth 40% of your total marks.

You cannot take this course along with GCSE Art.

EXAM BOARD AQA



Enterprise

Pearson BTEC Tech Award Level 1/2



SUBJECT INFORMATION

The course includes a mix of practical tasks and theoretical learning, giving students the chance to apply their knowledge in real-life situations. They will engage in activities such as developing a business idea, creating marketing strategies, and planning for business success. These hands-on projects not only help students understand business concepts but also build important skills such as problem-solving, decision-making, and teamwork.

COURSE OUTLINE

Enterprise is a dynamic and engaging course designed for those with an interest in business & entrepreneurship. This qualification allows students to dive deep into the world of business, providing them with the skills & knowledge needed to succeed in the modern business environment. Throughout the course, students will explore how businesses are set up and run, how to identify market opportunities & how to plan and manage a business. They will learn about the key factors

that influence business decisions & growth, such as finance, marketing and competition, while also gaining an understanding of the challenges & rewards of running a business.

Students will enhance their communication & collaboration abilities, which are essential in many other fields. By the end of the course, students will have gained practical experience & a well-rounded understanding of Business. This will equip them with the confidence & skills to pursue further studies in Business or related fields, as well as to pursue future career opportunities.

UNITS OF STUDY

Component 1:

Exploring Enterprises:

- Coursework
- Worth 30% of overall grade

Component 2:

Planning & presenting a Micro-Enterprise idea:

- Coursework
- Worth 30% of overall grade

Component 3:

Marketing & Finance for Enterprise:

- 2hr Exam
- Worth 40% of overall grade

FUTURE CAREERS

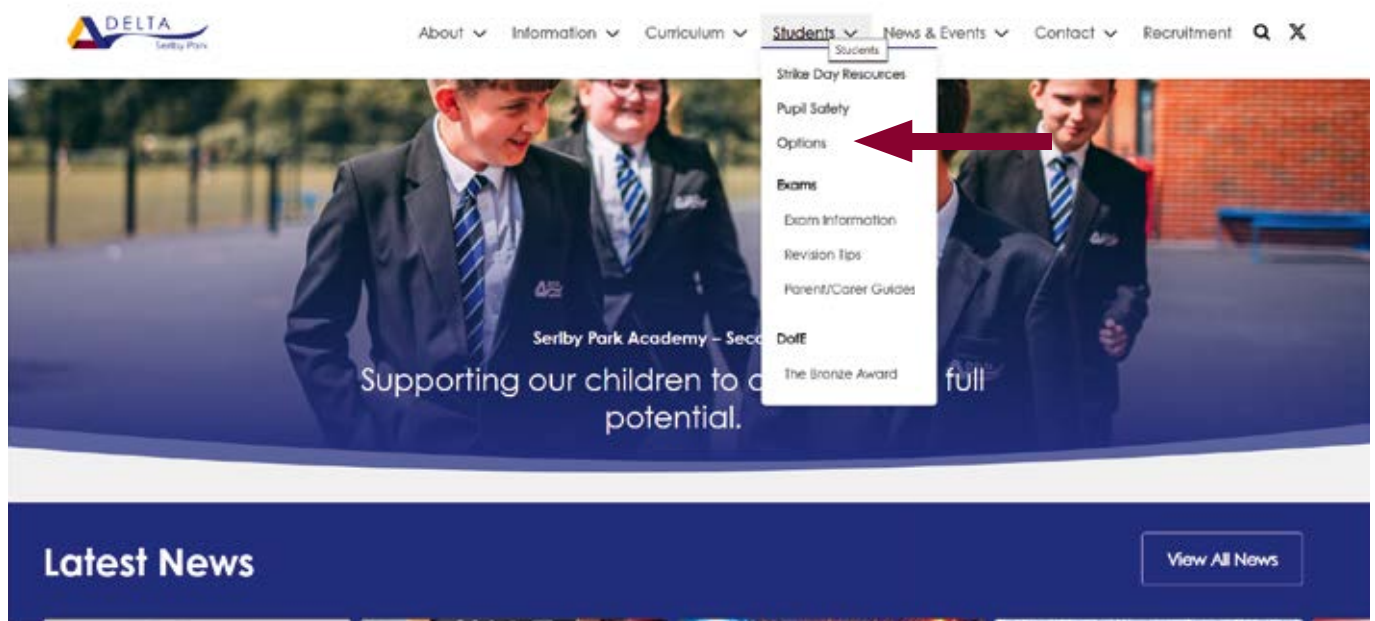
- Business Analyst
- Entrepreneur/Business Owner
- Retail Manager
- Event Planner
- Project Manager
- Marketing Professional

SUBJECT LEAD Mr Sidebottom

EXAM BOARD Pearson

Options choices form

Please visit Serlby Park Academy website to fill in our online options form. This can be found on the options page as shown below.



Complete the form carefully, ensuring the decisions you make accurately reflect the options you wish to choose.

The online options form needs to be completed no later than **1st April 2025**.

Students should have discussed their decisions with staff in school and parents/ carers.

Your child has been shown how to complete this process in an assembly and in tutor time.

www.serlbyparkacademy.org.uk

Notes



A page of lined paper with a yellow triangle on the left and a purple triangle on the right. The page is ruled with horizontal lines. The word 'Notes' is written in the top left corner.

Serlby Park Academy

Whitehouse Road

Bircotes

Doncaster

DN11 8EF

info@serlbyparkacademy.org.uk

01302 742 535